

Dicembre-December

Light 2016

COL  
LEC  
TION



**Lunetto Group**

since 1930

DISEGNARE PRODOTTI FUNZIONALI, ORIGINALI E IN LINEA CON LE ESIGENZE DEL MERCATO, FIGLI DEL TEMPO E DELLA CULTURA DEL MOMENTO. QUESTO CHIEDE METALMOBIL AI DESIGNER CHE COLLABORANO CON L'AZIENDA NELLA CREAZIONE DELLE COLLEZIONI DI SEDUTE TAVOLI E IMBOTTITI.

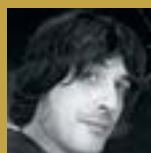
Designing of functional, original products, in line with market demands, fruit of the time and of the culture of the moment. This is what Metalmobil asks the designers that collaborate with the company in creating the collections of chairs, upholstered furniture and tables.



FRANCO BERTOLI & MAX PAJETTA



CARLO BIMBI



DAVIDE DANIELLI



GIORGIO DI TULLIO



ENRICO FRANZOLINI



FRANCESCO GERACI (1943-2010)



ROBERTO GIACOMUCCI



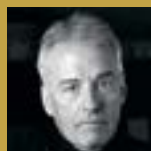
MAKIO HASUIKE & CO.



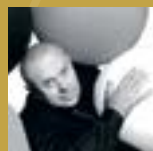
EMILIO NANNI



EGIDIO PANZERA



MARC SADLER



DENIS SANTACHIARA



TALOCCI DESIGN



STUDIO PROGETTISTI ASSOCIATI



RADICE ORLANDINI DESIGN STUDIO



METALMOBIL CONCEPT

# COLLEZIONI DESIGNERS

# Nassau

Marc Sadler



533



Nassau





533

Nassau

533



13

# Bikini

Marc Sadler





# Flint

Marc Sadler



535-A





535-A

Flint



535-A

Flint



# Maré

Marc Sadler







539



539



539

Maré

Maré



# Uni-Ka

Metalmobil Concept



594



599









601

601M





539M



Uni-Ka

599M

Uni-Ka



594



596M



596

41

# Uni

Francesco Geraci



Uni



552



553

45







550



386



378



386

Uni

51



# Dafne

Francesco Geraci



154



154



163



154



163



# Echo

Metalmobil Concept



54

333



151 - 153 - 152 - 150



150

Ilois

Francesco Geraci



302-160



002



002



139



57

002R



# Scoop

Denis Santachiara



S0169

58



S0167



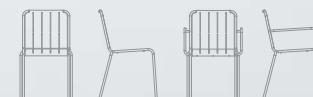
S0167



S0167

# Stripes

Talocci Design



# Friends

Franco Bertoli, Davide Danielli & Max Pajetta



62



201-202

# Syt

Francesco Geraci



200



# Apple

Egidio Panzera



64



P0009

# Boom

Emilio Nanni



P0008



P0007



P0007



# Playa

Carlo Bimbi



204-203

203-205



204 C



# Zero

Carlo Bimbi



208 - 209



# Plot

Enrico Franzolini



S0174

# Sandy

Francesco Geraci



078 - 077



# Filoline

Metalmobil Concept



71

001



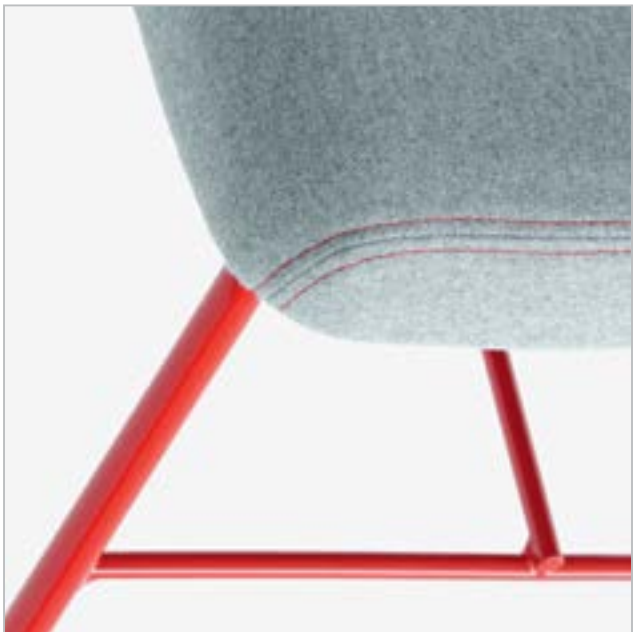
# Myra

Emilio Nanni



Myra





# To-Kyo

Makio Hasuike & Co.





82



541

To-Kyo



541

# Play

Radice Orlandini Design Studio



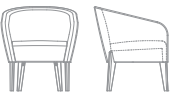


KyK

Carlo Bimbi



542



Kyk



88

542



543

# Kontea

Carlo Bimbi



590



586



588



590



590



# Marka

Carlo Bimbi



92

570



569-N



566



569-N



570

# Agatha

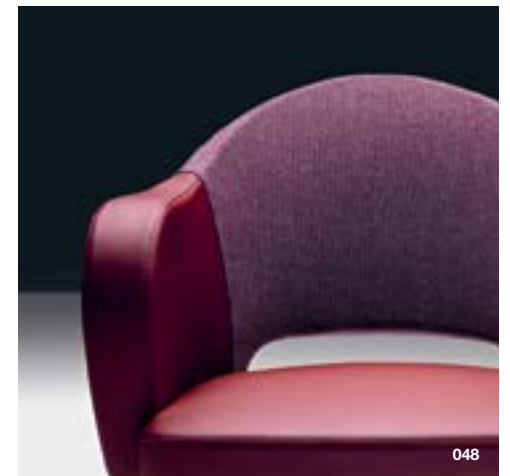
Metalmobil Concept



048

94

572



048

# Kicca

Francesco Geraci

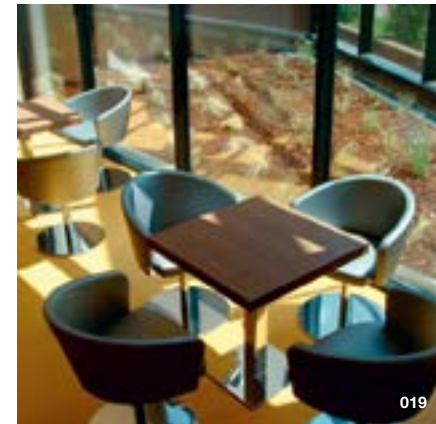


96

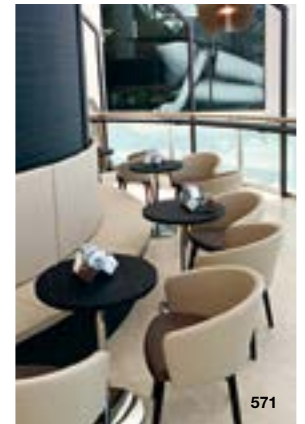
019 - 021 - 020



021-5P



019



571



# Talia

Francesco Geraci



98

161



161



# Punto

Francesco Geraci



LOCALE REALIZZATO DA / Premise carried out by: ELEMENTO - ARCHITECTURE (CH)



190



190



190





190-227



229-227-228

227-228-229



# Ring

Radice Orlandini Design Studio



671



670

672



# Zelda

Carlo Bimbi



093



091



093



# Luna

Metalmobil Concept



104

103



107



103-G



103



# Duo

Franco Bertoli & Max Pajetta



140



140-G



# Net

Francesco Geraci



# Virgola

Metalmobil Concept



# Urbino

Roberto Giacomucci



387



387



117



# Sharing

Giorgio di Tullio & Metalmobil Concept



388

# Twin

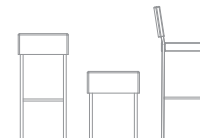
Metalmobil Concept



368



389



# Nomad

Metalmobil Concept



Nomad



123

# Giano+

Carlo Bimbi



806



807



804 - 803 - 802

125



802 - 803 - 804 | VERSIONE H 78 cm - Version h 78 cm



805 - 806 - 807 | VERSIONE H 112,5 cm - Version h 112,5 cm

# Dandy

Studio Progettisti Associati



207



# Abaco+

Metalmobil Concept



813 - 814 - 815 - 818 - 819



813 - 818

128



813

# Abaco

Metalmobil Concept

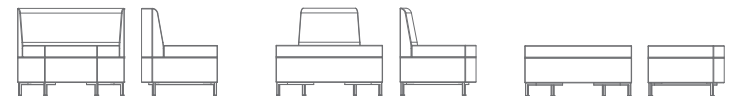


751-756-750-755  
752-758-753-754





759 - 760 - 761





# Space

Metalmobil Concept



249-250-242



250-251



765



249

# Dado

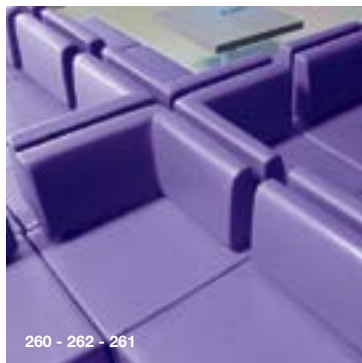
Studio Progettisti Associati



260 - 262



260 - 262 - 261



260 - 262 - 261



AX

Metalmobil Concept



AX



511 - 514 - 513

142



511

511A

512

512A

513

514



XT

Metalmobil Concept



490T

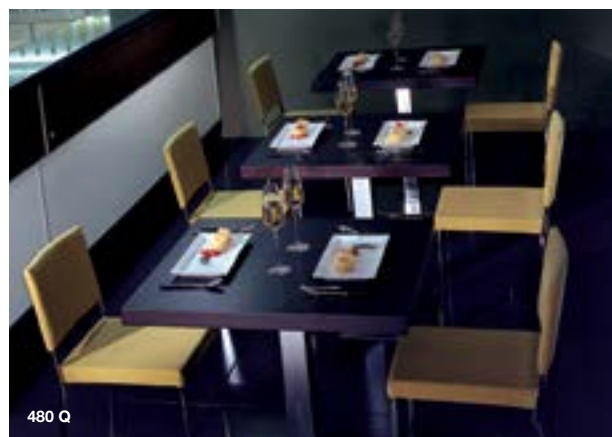
490A Q

480B T

495A T

494

477B



480 Q

MT

Metalmobil Concept



497



493

483

498A Q

491 T

499A T

482



498A T

EX

Metalmobil Concept



517



517R



Metalmobil Concept







Metalmobil Concept



FX

Metalmobil Concept



# Jet

Metalmobil Concept



521T - 521Q  
522T - 522Q

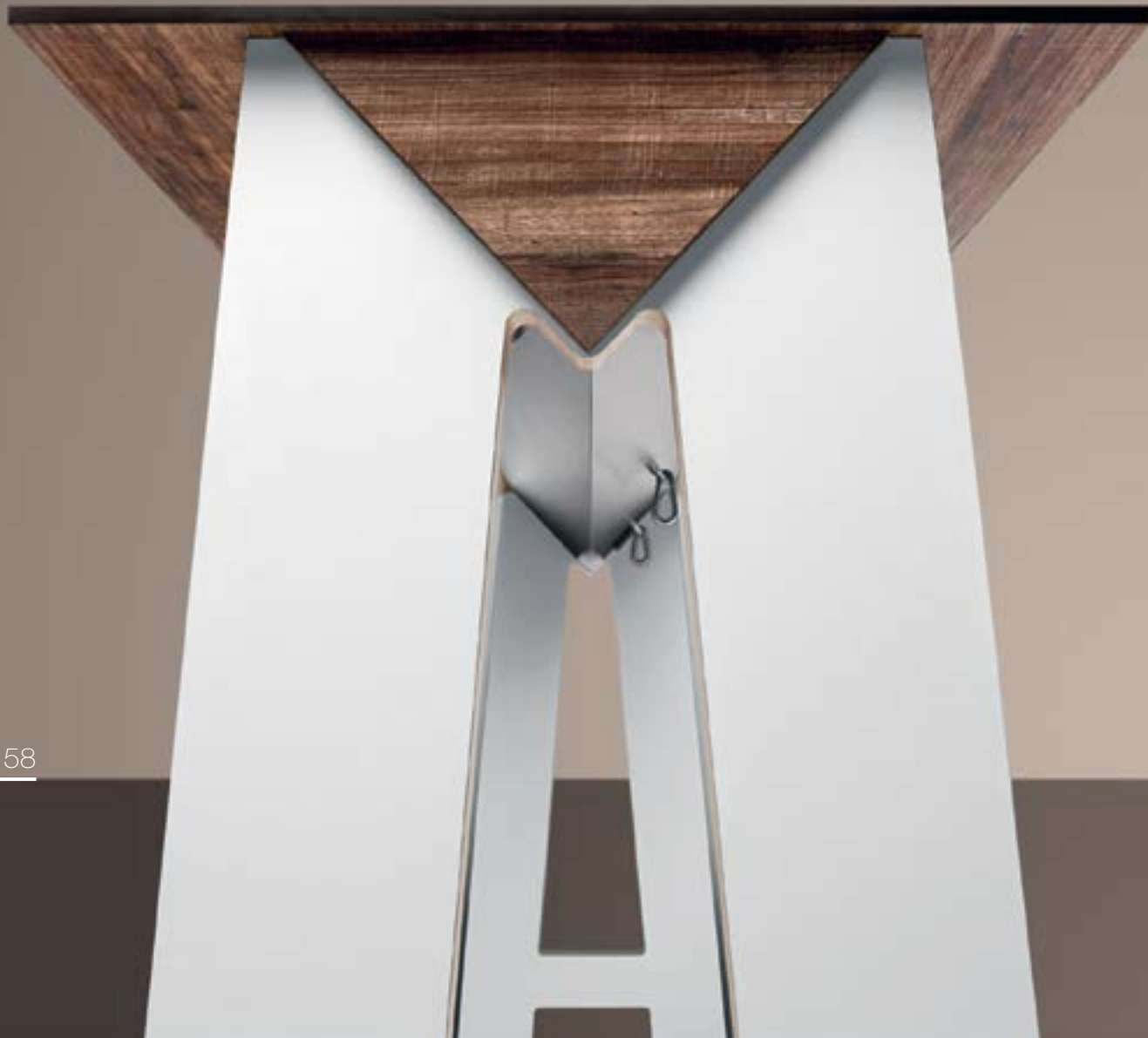


157

522-T

# Link & Low Link

Giorgio Di Tullio / R&D IFI



505



506



507



508



509



# Web

Metalmobil Concept



466

466 A



467

467 A



468

469

# Zenith

Metalmobil Concept



472-Q

---



472-R

---

# Deck

Metalmobil Concept



501-A



# Easy

Metalmobil Concept



445

# Tipologie Piani Tavoli

Top types



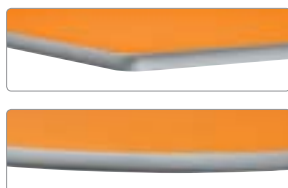
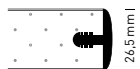
LAM  
Laminato

LAM



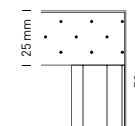
## B GP

PIANO IN LAMINATO CON BORDO GOMMA PIATTO COLORE ALLUMINIO.  
Laminated table top with flat rubber edge in aluminium colour.



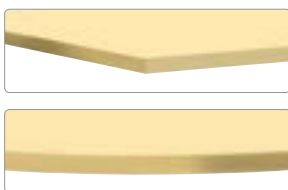
## S2

PIANO E BORDO IN LAMINATO.  
Laminated table top with laminated edge.



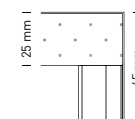
## B LAM

PIANO E BORDO IN LAMINATO.  
Laminated table top with laminated edge.



## S2 ABS

PIANO IN LAMINATO BIANCO, ROVERE O WENGÉ CON BORDO IN ABS STESSO COLORE.  
Table top in white, oak or wengé coloured laminate with ABS edge same colours.



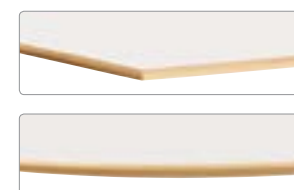
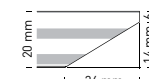
## B ABS

PIANO IN LAMINATO ROVERE O WENGÉ, CON BORDO IN ABS COLORE ROVERE O WENGÉ.  
Table top in oak or wengé coloured laminate with ABS edge same colours.



## 60°R

PIANO IN MULTISTRATO RIVESTITO IN LAMINATO CON BORDO 60°R IN FAGGIO.  
Laminated plywood table top with 60° reversed beech edge.





# Tipologie Piani Tavoli

Top types

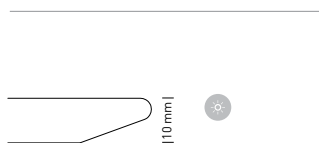


## STR Stratificato Compact laminate top



### COMPACT

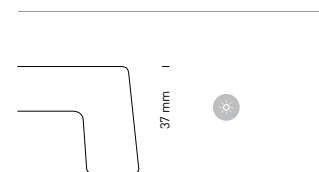
PIANI TAVOLI IN STRATIFICATO 10 MM.  
10 mm compact laminate table tops.



## WRZ WRZ



PIANI PER ESTERNO IN RESINA  
STAMPATI AD ALTA PRESSIONE  
RIVESTITI CON FILM DECORATIVO.  
Resin-coated top for outdoor use.



### FULL COLOUR MARBLE

PIANI TAVOLI IN STRATIFICATO 10 MM.  
10 mm compact laminate table tops.



### FULL COLOUR

PIANI TAVOLI IN STRATIFICATO 10 MM.  
10 mm compact laminate table tops.



FINI  
SHES

# Finiture Sedute

Seating Finishes

## MATERIALE PLASTICO

Plastic material

PE



**POLIETILENE ROTAZIONALE**  
Rota-moulded polyethylene

### APPLE



**BIANCO GHIACCIO**  
Ice White



**ARANCIO**  
Orange



**TORTORA**  
Turtle dove



**MOKA**  
Mocha

### SYT



**ARANCIO**  
Orange



**TORTORA**  
Turtle dove



**MOKA**  
Mocha

### PLAYA



**BIANCO GHIACCIO**  
Ice White



**MOKA**  
Mocha

### BOOM



**BIANCO GHIACCIO**  
Ice White



**ARANCIO**  
Orange



**TORTORA**  
Turtle dove



**MOKA**  
Mocha

### FRIENDS



**BIANCO GHIACCIO**  
Ice White



**ANTRACITE**  
Anthracite



**ROSSO**  
Red



**TORTORA**  
Turtle dove

PP



**POLIPROPILENE**  
Polypropylene

### NASSAU



**BIANCO RAL 9010**  
White



**CELESTE**  
PANTONE 283C  
Sky-Blu



**GRIGIO VAIO**  
RAL 7000  
Squirrel Grey



**VERDE PRATO**  
RAL 6010  
Grass Green



**TORTORA**  
NCS S4005-Y50R  
Turtle Dove



**OCRA RAL 8001**  
Ochre



**MARSALA**  
PANTONE 18-1438  
Marsala



**MOKA**  
NCS S7005-Y50R  
Mocha



**ANTRACITE RAL 7016**  
Anthracite



**NERO RAL 9005**  
Black

PP



**POLIPROPILENE**  
Polypropylene

### BIKINI



**BIANCO RAL 9010**  
White



**GRIGIO VAIO**  
RAL 7000  
Squirrel Grey



**VERDE PRATO**  
RAL 6010  
Grass Green



**TORTORA**  
PANTONE 402 C  
Turtle dove



**OCRA RAL 8001**  
Ochre

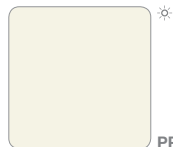


**NERO RAL 9005**  
Black



**POLIPROPILENE**  
Polypropylene

### FLINT



**BIANCO RAL 9010**  
White



**ROSSO RAL 3003**  
Red



**MOKA PANTONE 497 C**  
Mocha



**TORTORA PANTONE 402 C**  
Turtle Dove

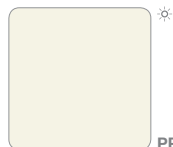


**VERDE INGLESE RAL 6005**  
English Green



**ANTRACITE RAL 7016**  
Anthracite

### MARÉ



**BIANCO RAL 9010**  
White



**ROSSO RAL 3003**  
Red



**MOKA PANTONE 497 C**  
Mocha



**TORTORA PANTONE 402 C**  
Turtle Dove



**GIALLO NCS S0580-Y30R**  
Yellow



**NERO RAL 9005**  
Black



**POLIPROPILENE**  
Polypropylene

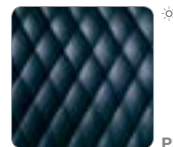
### UNI-KA



**BIANCO RAL 9016**  
White



**ROSSO RAL 3000**  
Red



**ANTRACITE RAL 7016**  
Anthracite



**ARANCIO RAL 2003**  
Orange



**MOKA NCS S7005-Y50R**  
Mocha



**NERO RAL 9005**  
Black



**VERDE BOSS PANTONE 380 C**  
Boss Green



**TORTORA NCS S4005-Y50R**  
Turtle-Dove



**MARSALA PANTONE 18-1438**  
Marsala

### UNI



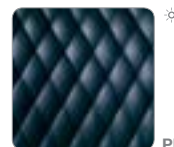
**BIANCO RAL 9016**  
White



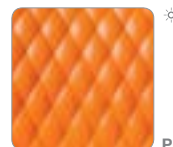
**AZZURRO NCS S2060-B**  
Azure



**ROSSO RAL 3000**  
Red



**ANTRACITE RAL 7016**  
Anthracite



**ARANCIO RAL 2003**  
Orange



**MOKA NCS S7005-Y50R**  
Mocha



**NERO RAL 9005**  
Black



**VIOLA RAL 4008**  
Violet



**VERDE BOSS PANTONE 380 C**  
Boss Green



**TORTORA NCS S4005-Y50R**  
Turtle-Dove



**GIALLO RAL 1004**  
Yellow



**MARSALA PANTONE 18-1438**  
Marsala



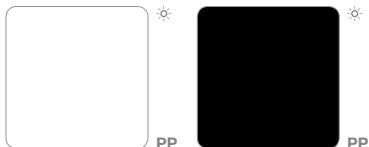
**TORTORA NCS S4005-Y50R**  
Turtle-Dove

**COLORE IGNIFUGO SU RICHIESTA**  
Fire-resistant color on request



**POLIPROPILENE**  
Polypropylene

**SANDY**



**BIANCO RAL 9016**  
White

**NERO RAL 9005**  
Black



**TECNOPOLIMERO COMPOSITO MULTISTRATO A DENSITÀ VARIABILE**  
(POLIPROPILENE + POLIETILENE TEREFALATO)

Technopolymer, multi-layer variable density (PP + PET polypropylene + terephthalate polyethylene)

**IBIS**



**BIANCO RAL 9016**  
White

**AVORIO RAL 9001**  
Ivory

**VERDE PANTONE 367C**  
Green

**ANTRACITE RAL 7016**  
Anthracite



**ARANCIO RAL 2003**  
Orange

**TORTORA PANTONE 402 C**  
Turtle Dove

**MOKA RAL 8017**  
Mocha



**TECNOPOLIMERO COMPOSITO MULTISTRATO A DENSITÀ VARIABILE**  
(POLIPROPILENE + POLIETILENE TEREFALATO)

Technopolymer, multi-layer variable density (PP + PET polypropylene + terephthalate polyethylene)

**ECHO**



**BIANCO RAL 9016**  
White

**ANTRACITE RAL 7016**  
Anthracite

**TORTORA PANTONE 402 C**  
Turtle Dove

**DAFNE**



**BIANCO RAL 9016**  
White

**ANTRACITE RAL 7016**  
Anthracite

**SCOOP**



**BIANCO RAL 9016**  
White



**PVC**  
PVC

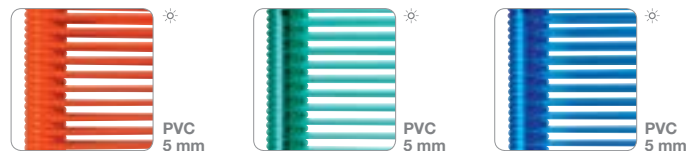
**PLOT**



**BIANCO**  
White

**NERO**  
Black

**BIANCO TRASLUCIDO**  
Translucent white



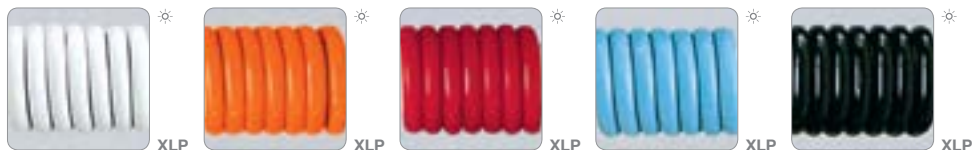
**ARANCIO**  
Orange

**VERDE TRASLUCIDO**  
Translucent green

**BLU TRASLUCIDO**  
Translucent sky blue

**XLP** **XILOPLAST**  
Xiloplast

**FIOLINE**



**BIANCO**  
White

**ARANCIO 16**  
Orange 16

**ROSSO 6**  
Red 6

**CELESTE 14**  
Sky-blue 14

**NERO 1**  
Black 1

**LAMINATO**  
Laminate

**LAM** **LAMINATO**  
Laminate / Stratifié / Laminat / Laminado

**LUNA**



**BIANCO**  
White

**ALLUMINIO**  
Aluminium

**LE** **LEGNO**  
Wood

**LE** **LEGNO**  
Wood

**DUO / LUNA / URBINO**

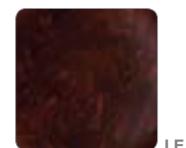


**FAGGIO TINTO ACERÓ**  
Maple stained beech wood

**FAGGIO NATURALE**  
Natural beech wood

**FAGGIO TINTO NOCE**  
Walnut stained beech wood

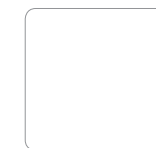
**FAGGIO TINTO NOCE CHIARO**  
Light walnut stained beech



**FAGGIO TINTO WENGÉ**  
Wengé stained beech wood



**FAGGIO TINTO NERO**  
Black stained beech wood



**FAGGIO TINTO CAMPIONE**  
Stained according to sample

**LUNA**



**IMPIALLACCIATO EBANO**  
Ebony Veneered



**IMPIALLACCIATO ZEBRANO**  
Zebrano Veneered

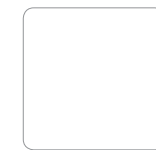
**DANDY**



**ROVERE SBIANCATO**  
Bleached Oak

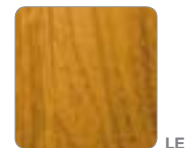


**ROVERE TINTO WENGÉ**  
Wengé stained oak wood



**ROVERE TINTO CAMPIONE**  
Stained according to sample

**FLINT SPECIAL EDITION**



**IROKO**  
Iroko

## CUOIO

Leather

### CU CUOIO



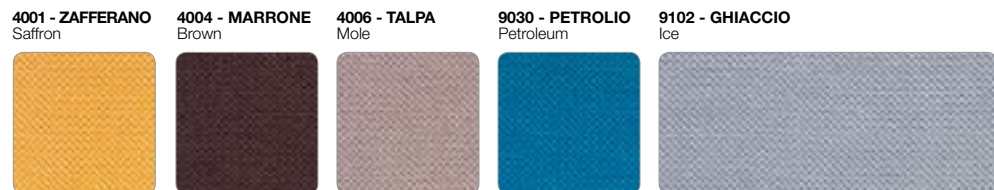
## TESSUTI

Fabrics

ALTRI COLORI SU RICHIESTA  
Other colors on request

### A SALENTO\*

95% PES 5% NY



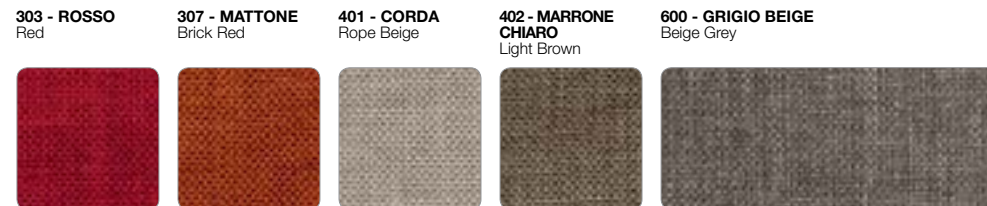
### A NAPPA

91% PVC 9% PES



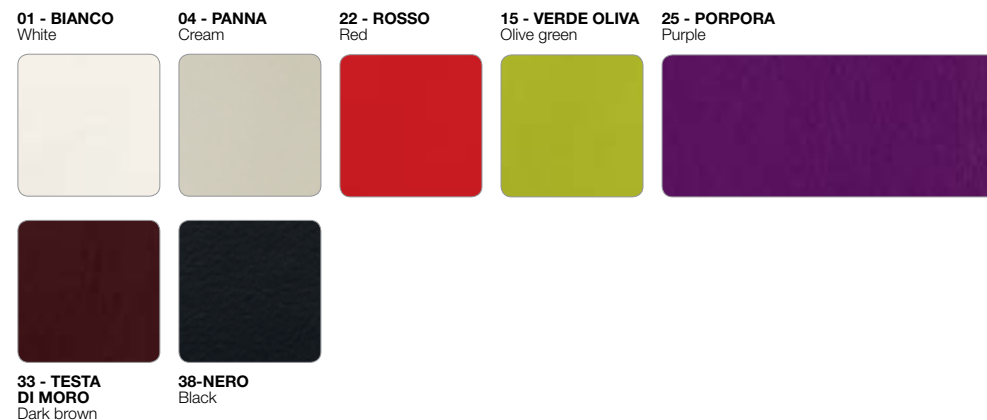
### B FLIRT

100% PES MARTINDALE 30.000



### B A511

90% PVC - 10% PES/CO MARTINDALE 51.200




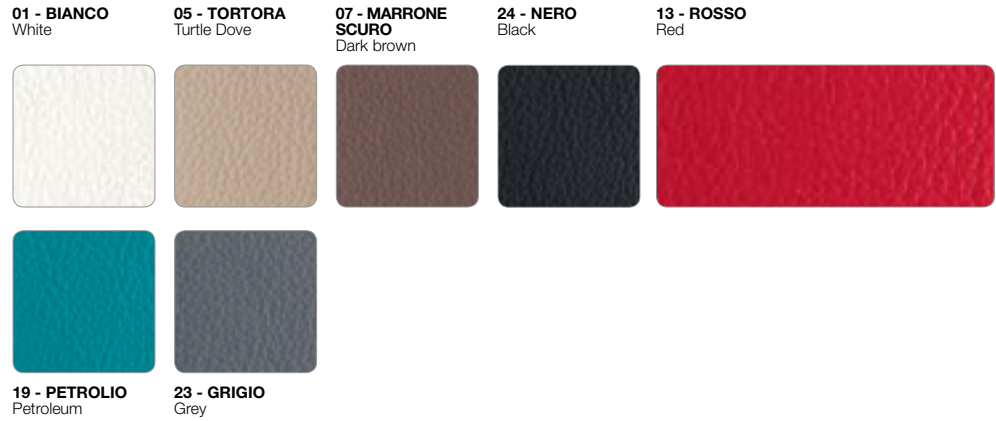
### B POLARIS PRO


9,05% PA - 90,50% PVC MARTINDALE 100.000

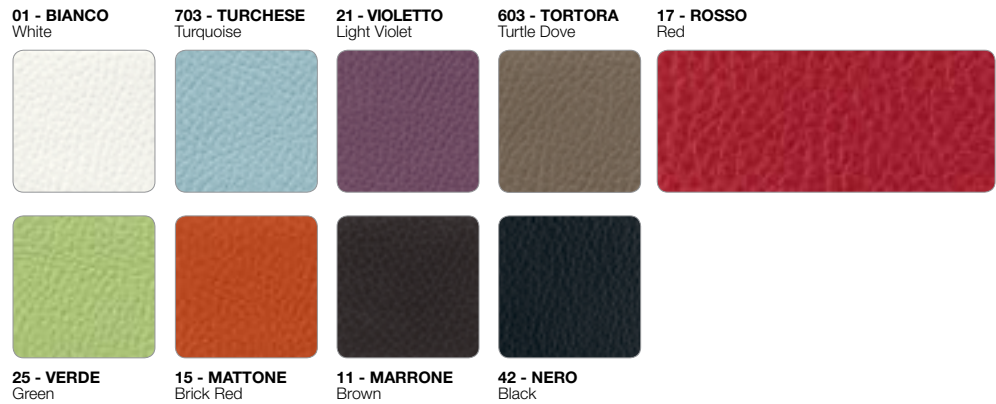


\*NON UTILIZZABILE PER UNI E UNI-KA IMBOTTITA / Not to be used for Uni and Uni-Ka upholstered

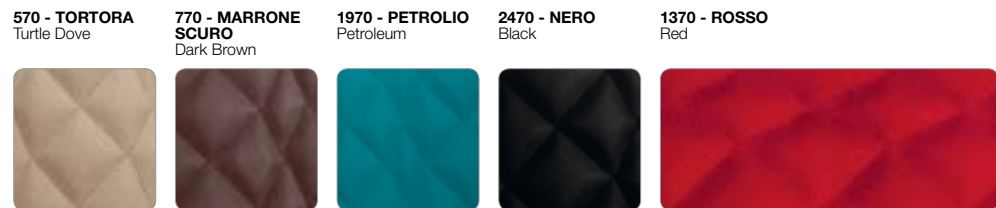
**B SKILL\***  1% PU - 30% PES/CO - 69% PVC MARTINDALE 50.000



**B INCA**  88% PVC - 8% PL - 4% CO MARTINDALE 50.000



**E DIAMOND\***  43% PVC - 33% PU - 20% CO/PES - 4% PP MARTINDALE 10.000



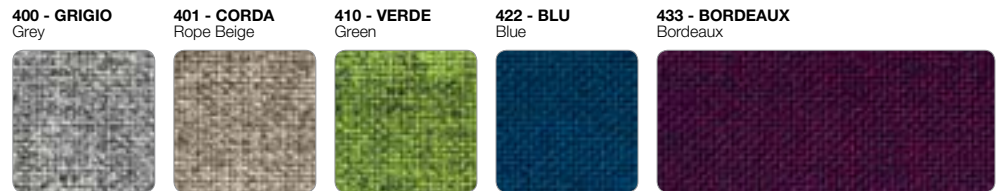
**E NORD WOOL**  70% WO - 25% PA - 5% AF MARTINDALE 100.000



**G LAMA**  65% WO - 15% WP - 20% PA MARTINDALE 100.000

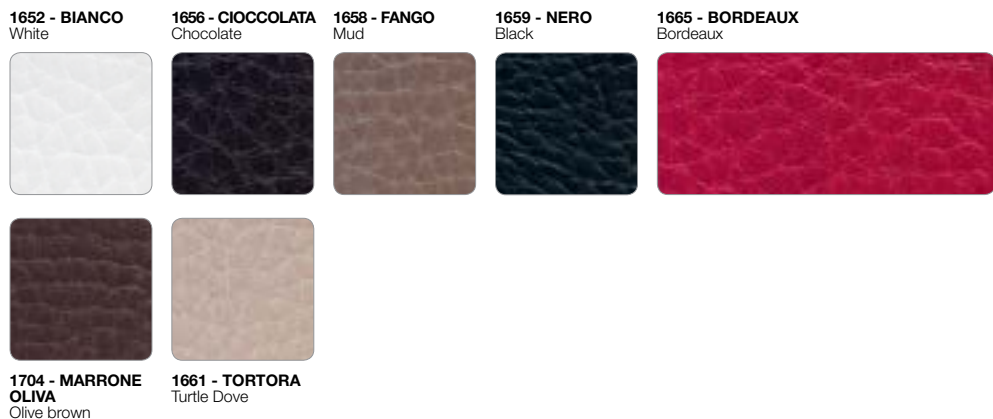


**G SOLE CS**  100% TREVIRA CS MARTINDALE 80.000



\*NON UTILIZZABILE PER UNI E UNI-KA IMBOTTITA / Not to be used for Uni and Uni-Ka upholstered





**SOLIDS & STRIPES**   
100% ACRILICO IDROPELLENTE / WATERPROOF ACRYLIC



METALMOBIL NON POTRÀ ESSERE CONSIDERATA RESPONSABILE DI EVENTUALI DANNI A TESSUTI DEI PROPRI PRODOTTI, CAUSATI DA CONTATTO O SFREGAMENTO CON MATERIALI CHE NE ALTERINO LE CARATTERISTICHE ESTETICHE. LA COLORAZIONE DI TESSUTI PUÒ LEGGERMENTE VARIARE DA UNA PARTITA ALL'ALTRA.

Metalmobil cannot be held responsible for any damage to fabrics used in the manufacture of its products caused by contact or rubbing with materials that alter its aesthetic characteristics. The colour of the fabrics may differ slightly from one lot to another.

Metalmobil ne sera pas responsable pour des éventuels dommages sur les revêtements de ses produits qui sont provoqués par un contact ou frottement avec des matériaux qui modifie leur aspect. La coloration du revêtement peut légèrement varier d'un lot de fabrication à l'autre.

Metalmobil kann nicht für eventuelle Schäden an Geweben, der Produkte zur Verantwortung gezogen werden, die durch den Kontakt oder den Abrieb mit Materialien verursacht wurden, die die optischen Eigenschaften beeinträchtigen. Die Färbung der Gewebe verschiedener Chargen kann leicht abweichen.

Metalmobil no podrá ser considerada responsable de los daños que pudieran ocasionarse a los tejidos de sus productos debido al contacto o al roce con materiales que alteren sus características estéticas. El color de los tejidos puede variar ligeramente de una partida a otra.

**NOTE TECNICHE: pulizia tessuti**

Technical notes: Fabrics cleaning instructions

**NAPPA / SKILL / INCA / DIAMOND / PAROTEGA NF / POLARIS PRO**

PULIRE CON PANNINO INUMIDITO CON ACQUA E SAPONE NEUTRO E SCIACQUARE BENE CON ACQUA PULITA. NON USARE SOLVENTI, CANDEGGIANTI, DETERSIVI SINTETICI, LUCIDANTI O SPRAY PER LUCIDARE.

To clean using a wet cloth, with water and mild soap, then rinse with clear water. Do not use bleaches, synthetic detergents, polishes or polishing sprays.

Nettoyer en utilisant un chiffon humide avec de l'eau et du savon, après rincer avec de l'eau nette. Ne pas utiliser blanchisseurs, détergents synthétiques, cirages ou cirages spray.

Mit einem feuchten Tuch mit Wasser und Seife putzen, dann spülen. Bleichmittel, Reinigungsmittel, Poliermittel oder Spray Poliermittel nicht benutzen.

Limpiar con un paño húmedo con agua y jabón neutro y enjuagar bien con agua limpia. No utilizar solventes, blanqueadores, desersivos sintéticos, abrillantadores o esprays para dar brillo.

**A511**

PULIRE CON ACQUA CALDA E UN PANNINO UMIDO IN MICROFIBRA. PER MACCHIE OSTINATE USARE UN DETERGENTE PER CAPI DELICATI DILUITO IN ACQUA. NON USARE SOLVENTI, CANDEGGIANTI, DETERSIVI SINTETICI, LUCIDANTI O SPRAY PER LUCIDARE.

To clean using warm water and a micro-fibre wet cloth. For the stubborn stains use a detergent for delicate garments diluted in water. Do not use bleaches, synthetic detergents, polishes or polishing sprays.

Nettoyer avec de l'eau chaude et un chiffon en micro-fibre. Pour les taches plus difficiles utiliser un détergent pour tissus délicates. Ne pas utiliser blanchisseurs, détergents synthétiques, cirages ou cirages spray.

Mit warm Wasser und einem Microfibrer Tuch putzen. Für die hartnäckigeren Flecken, benutzen Sie einen Reiniger für feines Geweben. Bleichmittel, Reinigungsmittel, Poliermittel oder Spray Poliermittel nicht benutzen.

Limpiar con agua caliente y con un paño húmedo de microfibra. Para manchas difíciles utilizar un detergente para ropa delicada disuelto en agua. No utilizar solventes, blanqueadores, desersivos sintéticos, abrillantadores o esprays para dar brillo.

**FLIRT / SOLE CS / SALENTO**

ASSORBIRE IMMEDIATAMENTE LA MACCHIA CON UNA CARTA ASSORBENTE. PER LE MACCHIE PIÙ RESISTENTI PULIRE CON PANNINO INUMIDITO CON ACQUA E SAPONE NEUTRO E SCIACQUARE BENE CON ACQUA PULITA.

To immediately absorb with blotting paper. For the stubborn stains use a wet cloth, with water and soap, then rinse with clean water.

Nettoyer rapidement en utilisant un chiffon. Dissoudre les taches plus difficiles avec un chiffon humide avec de l'eau et du savon, après rincer avec de l'eau nette.

Absorbieren den Fleck sofort mit Saugpapier aufaugen. Für die hartnäckigeren Flecken mit einem feuchten Tuch mit Wasser und Seife putzen, dann spülen.

Absorber inmediatamente la mancha con un papel absorbente. Para las manchas mas resistentes limpiar con un paño húmedo con agua y jabón neutro y enjuagar bien con agua limpia.

**NORD WOOL / LAMA**

PULIRE CON TRIELINA O CON DETERGENTI A SECCO (TIPO SPRAY).

To clean using trichloroethylene or dry cleaning (like sprays).

Nettoyer en utilisant trichloroéthylène ou avec détergents de nettoyage (comme spray).

Reinigen Sie mit Trichlorethylen oder Reinigungsmittel (wie Spray).

Limpiar con tricloroetileno o con detergentes de limpieza (como espray).

**SOLIDS & STRIPES**

SPAZZOLARE VIA LO SPORCO PRIMA CHE PENETRI NEL TESSUTO, E PULIRE IMMEDIATAMENTE UNA MACCHIA PRIMA CHE LASCI TRACCE. ASPORTARE LE MACCHIE CON ACQUA E UN DETERGENTE DELICATO. PER LE MACCHIE PIÙ TENACI, È POSSIBILE CANDEGGIARE.

To brush off dirt before it becomes embedded and wiping up stains as soon as they occur. Stains can be cleaned with mild soap and water. For tough stains, bleach can be used.

Déblayer la saleté avec une brosse avant qu'il ne pénètre dans le tissu, et nettoyer immédiatement la tache avant ça laisse des traces. Enlever les taches avec de l'eau et un détergent doux. Pour les taches plus rebelles, on peut utiliser de l'eau de Javel.

Verwenden Sie Feinwaschmittel und reinigen Sie die ganze Fläche. Immer mit klarem Wasser nachreinigen, damit keine Flecken bleiben. Bei hartnäckigen Flecken, können Bleichmittel auch verwendet werden.

Cepillar la suciedad antes de que se incrusta en el tejido y limpiar la mancha de inmediato antes de que deja huellas. Eliminar las manchas con la simple ayuda de agua y de jabón neutro. Para las manchas más complicadas, se puede utilizar lejía.

# Finiture Telaio

Frames finishes

AC

ACCIAIO  
Steel



**VR BIANCO RAL 9016**  
VR White



**VR BIANCO MARÉ RAL 9010**  
VR White Maré



**VR AVORIO RAL 9001**  
VR Ivory



**VR TORTORA PANTONE 402C**  
VR Turtle Dove



**VR GRIGIO ALU RAL 9006**  
VR Aluminium grey



**VR GRIGIO RAL 7042**  
VR Grey



**VR PELTRO**  
VR Pewter



**VR ANTRACITE RAL 7016**  
VR Anthracite



**VR NERO RAL 9005**  
VR Black



**VR ARANCIO RAL 2003**  
VR Orange



**VR ROSSO RAL 3000**  
VR Red



**VR ROSSO MARÉ RAL 3003**  
VR Red Maré



**VR MARRONE RAL 8017**  
VR Brown



**VR VERDE PANTONE 367 C**  
VR Green



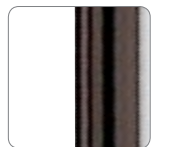
**VR VERDE INGLESE RAL 6005**  
VR English Green



**CR CROMATO**  
CR Chrome



**CR S CROMATO SATINATO\***  
CR S satin chrome



**CR CROMATO BRONZO**  
CR Bronze chrome  
Flint Special Edition



**CR S CROMATO OTTONATO**  
CR Brass chrome  
Flint Special Edition

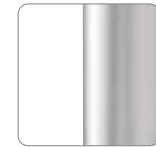
AX

ACCIAIO INOX AISI 304 18/10  
Aisi 304 18/10 Stainless Steel



**SPAZZOLATO\***  
Brushed

\*IBIS (ART. 002)  
\*SCOOP (ART. S0167)



**SAT SATINATO**  
SAT Satin



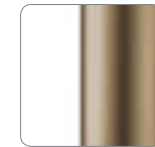
**LUC LUCIDO**  
LUC Gloss

AL

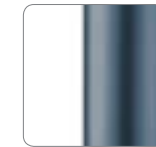
ALLUMINIO  
Aluminium

A  
COL

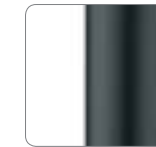
ALLUMINIO ANODIZZATO  
Anodised Aluminium



**BRONZO**  
Bronze  
Maré Special Edition



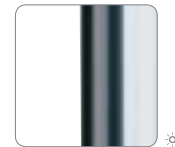
**FUMÉ**  
Fumé  
Maré Special Edition



**BLACK**  
Black  
Maré Special Edition

A  
LUC

ALLUMINIO ANODIZZATO LUCIDO  
Anodised gloss aluminium



**A LUC ANODIZZATO LUCIDO**  
A LUC Polished Anodised Aluminium

A  
PSH

A PSH ALLUMINIO LUCIDATO  
A Psh Polished Aluminium



**A PSH ALLUMINIO LUCIDATO**  
A PSH Polished Aluminium

A  
VR

ALLUMINIO VERNICIATO\*  
Coated aluminium



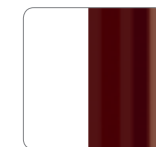
**VR BIANCO MARÉ RAL 9010**  
VR White Maré



**VR TORTORA PANTONE 402C**  
VR Turtle Dove



**VR ROSSO MARÉ RAL 3003**  
VR Red Maré



**VR MARRONE RAL 8017**  
VR Brown



**VR NERO RAL 9005**  
VR Black

\*DISPONIBILE SOLO PER / Only for:  
IBIS art.002, art. 160, art. 302 - KICCA art. 020, art. 021 - LUNA art.103 - DUO art.140  
ECHO art. 150, art. 151, art. 152 - DAFNE art. 154, art. 163 - TWIN art. 368 - UNI art. 550, art.551, art.552, art.378

\*MARÉ (ART. 539)

# Finiture Piani Tavoli

Table tops finishes

LE

**LEGNO**  
Wood



LE

**FAGGIO TINTO ACERO**  
Maple stained beech wood



LE

**FAGGIO NATURALE**  
Natural beech wood



LE

**FAGGIO TINTO NOCE**  
Walnut stained beech wood



LE

**FAGGIO TINTO NOCE CHIARO**  
Light walnut stained beech



LE

**FAGGIO TINTO WENGÉ**  
Wengé stained beech wood



LE

**FAGGIO TINTO NERO**  
Black stained beech wood



LE

**FAGGIO TINTO CAMPIONE**  
Stained according to sample

WRZ

**PIANI PER ESTERNO IN RESINA STAMPATI AD ALTA PRESSIONE RIVESTITI CON FILM DECORATIVO**  
Resin-coated top for outdoor use



☀

**BIANCO**  
White

STR

**STRATIFICATO\***  
Stratified



☀

**BIANCO**  
White



☀

**GRIGIO ARGENTO**  
Silver grey



☀

**NERO**  
Black



☀

**MOKA**  
Mocha



☀

**BEIGE**  
Beige



☀

**ANTRACITE**  
Anthracite



**WOOD**  
Wood



**ROBUR**  
Robur



**MARBLE BIANCO**  
White marble



**MARBLE NERO**  
Black marble

LAM

**LAMINATO**  
Laminate

**SOLO COME FINITURA PER FIANCO, ZOCCOLO E RETRO PANCA SPACE, VEDI LAMINATI DISPONIBILI PAG. 190**  
Finish for side, plinth and back of Space bench only, see available laminates p. 190

LE

**LEGNO**  
Wood

**SOLO PER BORDO PIANO IN LAMINATO 60°R, VEDI COLORI DISPONIBILI PAG. 188**  
For edge of 60° R laminate tops only, see available colours p. 188

**\*ALTRI COLORI SU RICHIESTA**  
Other colours available on demand

# Legenda

Index

## LAM LAMINATO Laminate

### CAT. J



ARPA 20



ARPA 1286



ARPA 211



ARPA 509



ABET 313 - WENGÈ

## LAM LAMINATO Laminate

### CAT. K



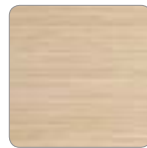
ABET 861



ABET 1354 - ZEBRANO



ABET 385 - ACERO



ARPA 4420 - ROVERE



ABET 1810



ARPA 641



ARPA 526



ARPA 244



ARPA 1890



ABET 837



ARPA 693

AC	ACCIAIO Steel	R	MECCANISMO DI RITORNO Kick-back device
	100% ACRILICO IDROREPELENTE 100% waterproof acrylic	NY	NYLON Nylon
AF	ALTRE FIBRE Other Fibres	PA	POLIAMMIDE Polyamide
AL	ALLUMINIO Aluminium	PE	POLIETILENE Polyethylene
A LUC	(ALLUMINIO) ANODIZZATO LUCIDO Anodised Gloss (Aluminium)		PER ESTERNI NELLE FINITURE IDONEE For outdoor use, in the suitable finishes
A PSH	(ALLUMINIO) LUCIDATO Polished (Aluminium)		RESISTENTE A SALSEDINE, CLORO E ACQUE TERMALI Resistant to salty environments, chlorine and thermal waters
A VR	(ALLUMINIO) ANODIZZATO VERNICIATO Painted anodized aluminium	PES	POLIESTERE Polyester
A COL	(ALLUMINIO) ANODIZZATO Painted anodized aluminium	PP	POLIPROPILENE Polypropylene
AX	ACCIAIO INOX Stainless Steel		PROVE DI RESISTENZA ALLA ROTTURA Breaking strength tests
BN	BIANCO-NERO White	PVC	FILO IN PVC 5 MM PVC 5 Mm Tread
CO	COTONE Cotton	PP+PET	TECNOPOLIMERO COMPOSITO MULTISTRATO A DENSITÀ VARIABILE (POLIPROPILENE + POLIETILENE TEREFALATO) Multi-layer variable density man-made Composite polymer (polypropylene + Terephthalate polyethylene)
COM	TESSUTO FORNITO DAL CLIENTE Customer Own Materials		RICICLABILE Recyclable
CR	CROMATO Chrome	SAT	FINITURA SATINATA Satin finishing
CR S	CROMATO SATINATO CR S satin chrome	STR	STRATIFICATO Stratified
	GIREVOLE Swivelling	TE	TESSUTO Fabric
	IGNIFUGO Flame retardant	VR	VERNICIATO Paint Finishing
IMP	IMPIALLACCIATO Veneered	WO	LANA Wool
LAM	LAMINATO Laminate	WP	ALPACA Alpaca
LE	LEGNO Wood	WRZ	PIANI PER ESTERNO IN RESINA STAMPATI AD ALTA PRESSIONE RIVESTITI CON FILM DECORATIVO Resin-coated top for outdoor use
LI	LINO Linen	XLP	XILOPLAST Xiloplast
LS	LAMIERA STAMPATA Pressed metal sheet		
LUC	FINITURA LUCIDA Gloss finishing		